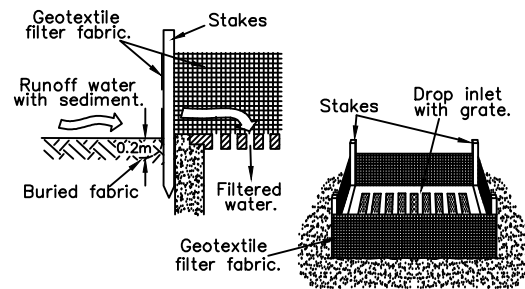
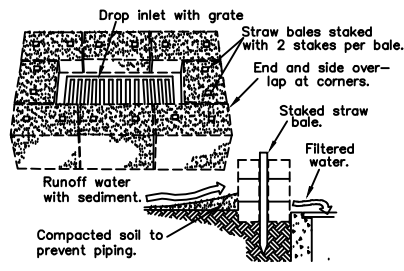


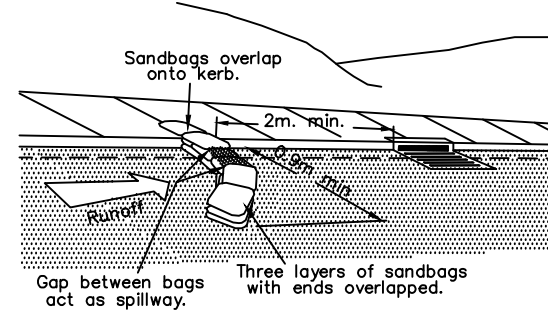
Geotextile Fabric Barrier



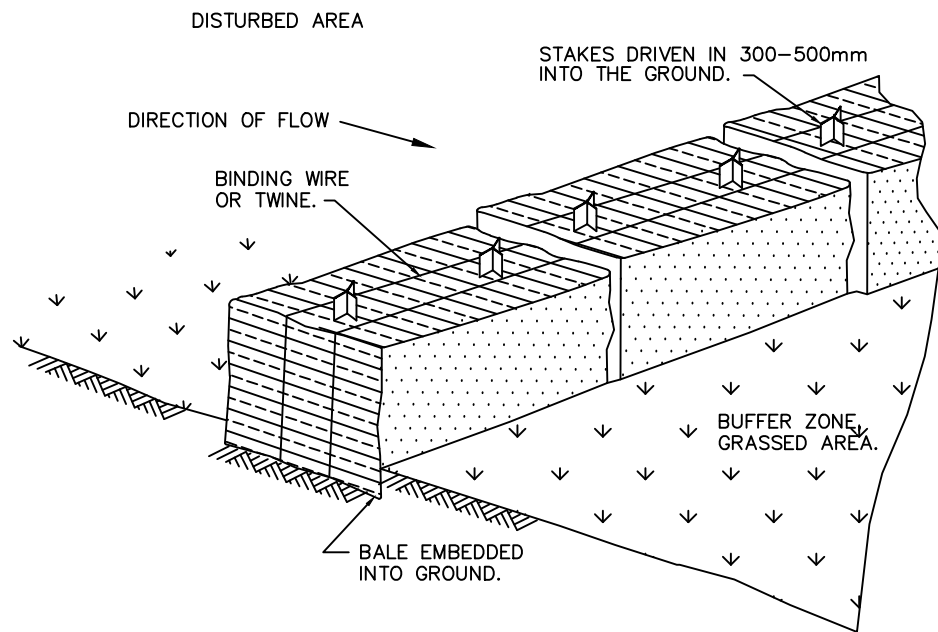
Geotextile Filter Fabric Drop  
Inlet Sediment Trap  
Option 1



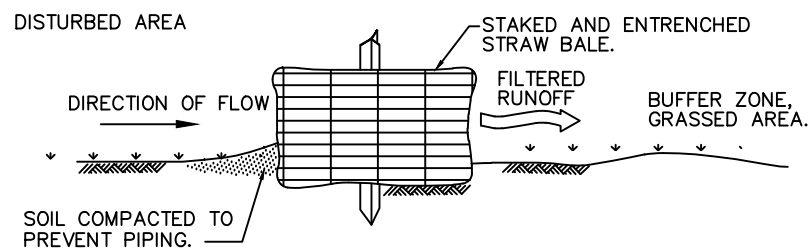
Straw Bale Drop Inlet  
Sediment Trap  
Option 2



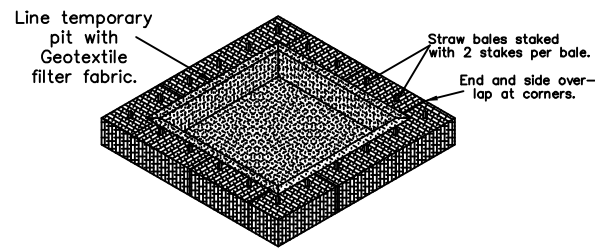
Sandbag Sediment Trap.



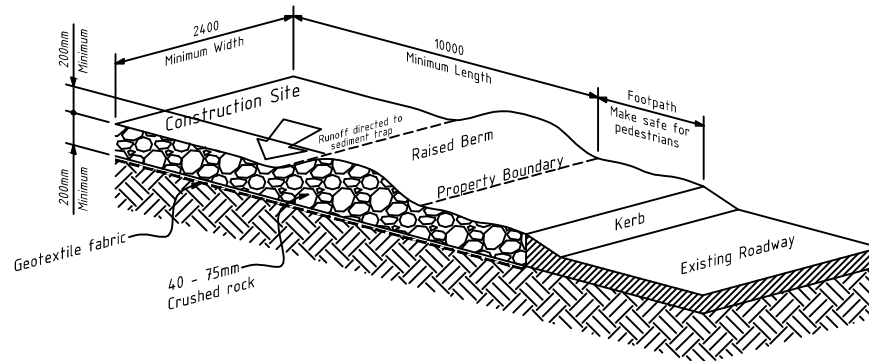
Typical Straw Bale Bund  
N.T.S.



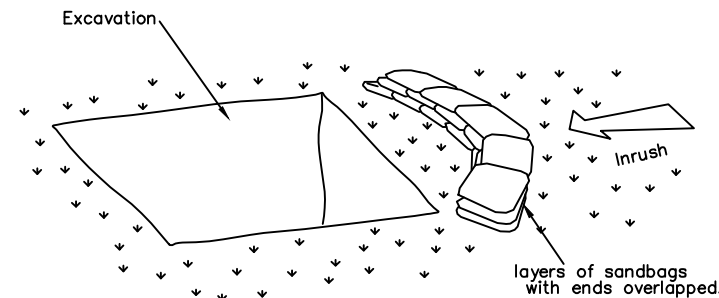
Section Straw Bale Bund  
N.T.S.



Temporary Pump-Out Pit  
NOT FOR CONCRETE WASH OUT



Temporary Construction Exit



Temporary Sediment  
Sandbag Barrier

## EROSION AND SEDIMENT CONTROL NOTES

### GENERAL INSTRUCTIONS

- THIS PLAN IS TO BE READ IN CONJUNCTION WITH THE ENGINEERING PLANS, AND ANY OTHER PLANS OR WRITTEN INSTRUCTIONS THAT MAY BE ISSUED AND RELATING TO DEVELOPMENT AT THE SUBJECT SITE.
- THE SITE SUPERINTENDENT WILL ENSURE THAT ALL SOIL AND WATER MANAGEMENT WORKS ARE LOCATED AS INSTRUCTED IN THIS SPECIFICATION.
- ALL BUILDERS AND SUB-CONTRACTORS WILL BE INFORMED OF THEIR RESPONSIBILITIES IN MINIMISING THE POTENTIAL FOR SOIL EROSION AND POLLUTION TO DOWNSLOPE LANDS AND WATERWAYS.

### CONSTRUCTION SEQUENCE

- THE SOIL EROSION POTENTIAL ON THIS SITE SHALL BE MINIMISED. HENCE WORKS SHALL BE UNDERTAKEN IN THE FOLLOWING SEQUENCE:
  - INSTALL SEDIMENT FENCES
  - UNDERTAKE SITE DEVELOPMENT WORKS IN ACCORDANCE WITH THE ENGINEERING PLANS. PHASE DEVELOPMENT SO THAT LAND DISTURBANCE IS CONFINED TO AREAS OF WORKABLE SIZE.

### EROSION CONTROL

- DURING WINDY CONDITIONS, LARGE, UNPROTECTED AREAS WILL BE KEPT MOIST (NOT WET) BY SPRINKLING WITH WATER TO KEEP DUST UNDER CONTROL.
- FINAL SITE LANDSCAPING WILL BE UNDERTAKEN AS SOON AS POSSIBLE AND WITHIN 20 WORKING DAYS FROM COMPLETION OF CONSTRUCTION ACTIVITIES.
- STOCKPILES WILL NOT BE LOCATED WITHIN 2 METRES OF HAZARD AREAS, INCLUDING LIKELY AREAS OF CONCENTRATED OR HIGH VELOCITY FLOWS SUCH AS WATERWAYS. WHERE THEY ARE BETWEEN 2 AND 5 METRES FROM SUCH AREAS, SPECIAL SEDIMENT CONTROL MEASURES SHOULD BE TAKEN TO MINIMISE POSSIBLE POLLUTION TO DOWNSLOPE WATERS, E.G. THROUGH INSTALLATION OF SEDIMENT FENCING.

### FENCING

- ANY SAND USED IN THE CONCRETE CURING PROCESS (SPREAD OVER THE SURFACE) WILL BE REMOVED AS SOON AS POSSIBLE AND WITHIN 10 WORKING DAYS FROM PLACEMENT.
- WATER WILL BE PREVENTED FROM ENTERING THE PERMANENT DRAINAGE SYSTEM UNLESS IT IS RELATIVELY SEDIMENT FREE, I.E. THE CATCHMENT AREA HAS BEEN PERMANENTLY LANDSCAPED AND/OR ANY LIKELY SEDIMENT HAS BEEN FILTERED THROUGH AN APPROVED STRUCTURE.
- TEMPORARY SOIL AND WATER MANAGEMENT STRUCTURES WILL BE REMOVED ONLY AFTER THE LANDS THEY ARE PROTECTING ARE REHABILITATED.

### OTHER MATTERS

- ACCEPTABLE RECEPTORS WILL BE PROVIDED FOR CONCRETE AND MORTAR SLURRIES, PAINTS, ACID WASHINGS, LIGHT-WEIGHT WASTE MATERIALS AND LITTER.

### OTHER MATTERS


- RECEPTORS FOR CONCRETE AND MORTAR SLURRIES, PAINTS, ACID WASHINGS, LIGHT-WEIGHT WASTE MATERIALS AND LITTER ARE TO BE EMPTIED AS NECESSARY. DISPOSAL OF WASTE SHALL BE IN A MANNER APPROVED BY THE SITE SUPERINTENDENT.

### SITE INSPECTION & MAINTENANCE

- EROSION AND SEDIMENT CONTROL MEASURES SHALL BE INSPECTED AFTER RAINFALL EVENTS TO ENSURE THAT THEY OPERATE EFFECTIVELY. REPAIR AND OR MAINTENANCE SHALL BE UNDERTAKEN AS REQUIRED.

### CONCRETE WASHOUT

- CONCRETE WASHOUT IS TO BE COMPLETED INTO DESIGNATED WASH OUT BINS. CONCRETE WASH OUT BINS ARE TO BE MAINTAINED TO ENSURE NO LEACHING OF WASHOUT WATER OR WASTE CONCRETE INTO THE SURROUNDING ENVIRONMENT. WASHOUT WATER IS TO BE PUMPED OUT AND RETURNED TO THE CONCRETE SUPPLY CONTRACTOR.

 Department of Planning  
Housing and Infrastructure


Issued under the Environmental Planning and Assessment Act 1979

Approved Application No DA 22/12013

Granted on the 29 February 2024

Signed D James

Sheet No 55 of 60

|  |                      |  |            |                      |                  |                |                        |
|--|----------------------|--|------------|----------------------|------------------|----------------|------------------------|
| Drawing Title  |                      | ENVIRONMENTAL CONTROL<br>GENERAL DETAILS & NOTES |            | Drawn<br>A. WILSON   | Date<br>25.11.22 | Scale<br>NOTED | Third Angle Projection |
| Project  |                      | CHARLOTTE PASS                                   |            | Checked<br>S. TURNER | Date<br>25.11.22 | Material<br>-  |                        |
| Sub Project  |                      | GUTHRIES CHAIR                                   |            | Approved<br>-        | Date<br>-        | Notes<br>-     |                        |
| Project No./Drawing No.  |                      | 2020-15-C-019                                    |            | Revision             |                  | A              |                        |
| File: G:\Shared drives\Drawings\Projects\Charlotte Pass\Guthries\Drawings\2020-15-C-019.dwg  |                      |  |            |                      |                  |                |                        |
| All dimensions in millimeters. DO NOT SCALE. If in doubt ask.  |                      |  |            |                      |                  |                |                        |
|  Doppelmayr Australia Pty Ltd. Phone: +61 2 6456 2385<br>27 Lee Avenue, Levee Estate Fax: +61 2 6456 2386<br>Jindabyne NSW 2627 Web: www.doppelmayr.com.au<br>Australia AIN: 12 005 054 133 Email: info@doppelmayr.com.au |                      |  |            |                      |                  |                |                        |
| This drawing is the intellectual property of DOPPELMAYR AUSTRALIA Pty Ltd and must not be copied or utilised in whole or in part without permission and is subject to return upon request. Copyright © of DOPPELMAYR AUSTRALIA Pty Ltd. All rights reserved.   |                      |  |            |                      |                  |                |                        |
| Rev  | Revision Description | By   | Date       |                      |                  |                |                        |
| A  | FIRST ISSUE          | A. WILSON  | 25.11.2022 |                      |                  |                |                        |